



RAT-2



RAT-2

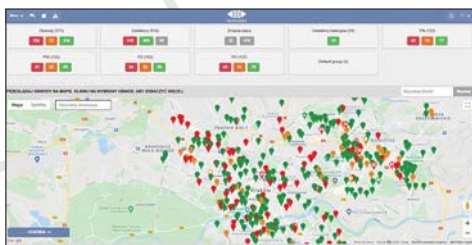
Leak detector for remote monitoring of district heating network.

Leak detection by insulation and loop resistance measurements.

General information:	Leak detection in impulse and resistance networks	
Application:	District heating	
Technical specification:	Type of measurement	Specification
Main functions:	Insulation resistance	0 - 200 MΩ
	Loop resistance	0 - 100 kΩ
	Galvanic voltage	0 - 2000 mV
	Continuous loop control	Triggering of detector by breaking of loop
	Control of connection to the pipe	Resistance measurement between supply and return pipe
Insulation resistance measurement:	Test range	0 - 200 MΩ
	Test voltage	24 V
	Test current	max. 100 mA
	Accuracy up to 1 MΩ	+/- (2% of m. + 8 digits)
	Accuracy over 1 MΩ	+/- (5% of m. + 8 digits)
	<i>Measurement in both polarities</i>	
Loop resistance measurement:	Test range	0 - 100 kΩ
	Test voltage	24 V
	Test current	max. 100 mA
	Accuracy	+/- (2% of m. + 8 digits)
	<i>Measurement in both polarities</i>	

Galvanic voltage:	Test range Accuracy	0 - 2000 mV +/- 5%
Communication:	2g/CAT-M/NB-IoT/LAN/MODBUS (RS485)/MODBUS TCP/IP (LAN)/RELAY	
Number of channels:	2 or 4	
Power supply:	12 V DC / 120 - 240 V AC	
Housing:	IP65	
Dimensions:	200 x 150 x 75 mm	
Weight:	0,64 kg	

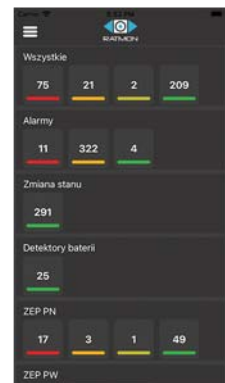
Software:



RATMON - web application for remote data acquisition and analysis of test results as well as configuration and operation of detectors.



RATMON MOBILE - Android and iOS application for reviewing of pipe loops state.



RATMANAGER - PC software for configuration and operation of detectors.

Scope of delivery:

- RAT-2 device with DIN mounting bracket
- 12 V AC/DC power adapter
- GSM antenna (for devices with GSM module)

Optional accessories:

DESCRIPTION

- Battery module
- External GSM antenna
- Basic connection box, two loops
- Constant impedance connection box, one loop
- Five-core wire connection box, two loops
- BNC/UHF connection box, two loops
- Hermetic power adapter
- Grounding bracket
- External cabinet with NEMA certificate

INDEX

- BAT-1
- ANT-1
- BOX-1
- BOX-3
- BOX-4
- BOX-5
- ZH-1
- GND-1
- SK-1